



## 2018 PPIHC Accredited Media “How To” Guide

*The PPIHC is one of the most unique races in the world and requires different rules for accredited media than other motorsport events.*

*It is imperative that this document is carefully reviewed prior to Race Week.*

TABLE OF CONTENTS	
SECTION	PAGE NUMBER
Media Vest & Credential Pickup	2
Media Meeting Schedule	2
PPIHC History	3
Pikes Peak – America’s Mountain	3
Pikes Peak Practice Day Access For Credentialed Media	4
Pikes Peak Race Day Access For Credentialed Media	4
Summit Access For Credentialed Media	5
PPIHC Media-Use Photos	5
Competitor Access Opportunities	5
Media Rules and Reminders	6
PPIHC Media Safety	7
Media Race Week Schedule	8-9
Addresses	9
Practice & Qualifying Groups	10
PPIHC Course Map	11
Race Week Information, Results and Press Releases	12
Official PPIHC iOS and Android App	12
Helpful Links	12
PPIHC Media Licensing and Commercial Rights Policy	12
2018 Competitor List	

### **MEDIA VEST & CREDENTIAL PICKUP:**

After a **mandatory** Media Meeting to review safety protocols, the Race Week Schedule and competitor access opportunities, you will receive:

- One Race Media credential
- One Media Guide
- One 2018 PPIHC Souvenir Program
- One PPIHC Media Vest (no return required) to allow access outside of designated spectator areas (foot traffic only, no parking).

Your Race Media credential will permit access to Pikes Peak - America's Mountain for the Practice/Qualifying mornings on June 19-22, 2018 and on Race Day, Sunday, June 24, 2018, at 2:00am, one hour before the Gateway opens to the public.

### **MEDIA MEETING SCHEDULE:**

- Aspen Room: Monday, June 18 - 5:00pm
- Aspen Room: Tuesday, June 19 - 6:00pm
- Aspen Room: Wednesday, June 20 - 6:00pm
- Aspen Room: Thursday, June 21 - 7:00pm
- NO MEETING: Friday, June 22
- Aspen Room: Saturday, June 23 - 3:00pm

You only need to attend one Media Meeting. Credentials will be available for pick up at these times only. Late entry during any meetings cannot be accommodated. Allow approximately one hour for this process. Please schedule your travel arrangements around these meeting times as you will not be able to access Pikes Peak – America's Mountain for Practice/Qualifying Days and/or Race Day, as accredited media, without your credential.

Hotel Elegante is located at [2886 S Circle Dr., Colorado Springs, CO 80906](http://www.hotelegante.com).

**HISTORY:**

The Broadmoor Pikes Peak International Hill Climb, brought to you by Gran Turismo, is the second oldest motorsport race in America and a long-standing tradition in Colorado Springs and the Pikes Peak Region. First competed in 1916, this year marks the 96th running of the “Race to the Clouds.”

The race is held on a 12.42-mile course, with 156 turns, beginning at 9,390 feet and finishing at the 14,115-foot summit of America’s Mountain - Pikes Peak. As the drivers climb toward the summit, the thin air slows reflexes and saps muscle strength. The thin air also robs engines of 30% of their power at the summit. Competitors and vehicles must be in top shape simply to finish...let alone win!

The current automobile record of 8:13.878 was set by Sebastien Loeb in 2013. The fastest motorcycle time was clocked in 2017 by Chris Fillmore, 9:49.625.

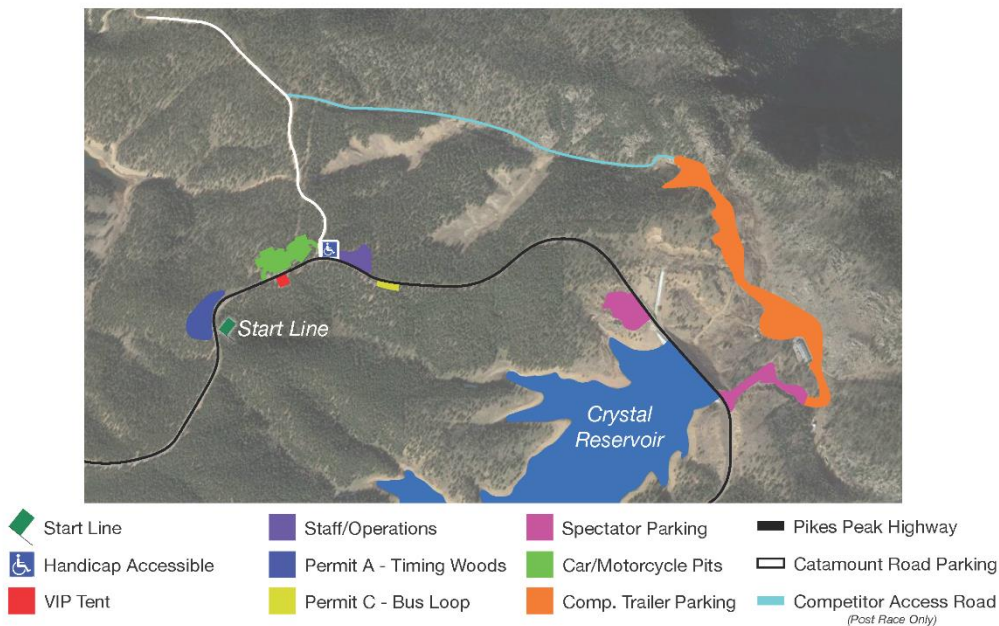
There is no other race in the world like The Broadmoor Pikes Peak International Hill Climb. It attracts race teams willing to invest large sums and months of preparation to compete for the title - “King of the Mountain.”

To learn more about the history of this world class event visit the Penrose Heritage Museum – [The Pikes Peak Hill Climb Experience](#) at 11 Lake Circle, Colorado Springs, CO. Museum hours are 9 to 5 daily, except Sunday 1-5.

**PIKES PEAK – AMERICA’S MOUNTAIN:**

The Pikes Peak – America’s Mountain Gateway is located at [5089 Pikes Peak Highway, Cascade, CO 80809](#).

The Main PPIHC Pit Area and Start Line are just over 7 miles (11.27 km.) past the Gateway.



## **PIKES PEAK PRACTICE DAY ACCESS FOR CREDENTIALLED MEDIA:**

- All credentialed media will be allowed to attend PPIHC Practice Days only after first attending one of the mandatory media meetings where they will receive a media credential and media vest. **No media will be allowed through the Gateway after 5:00am.**
  - Any credentialed media attempting to attend a Practice Day without a credential must purchase a practice day ticket - \$25/day, pending ticket availability. Practice tickets are only available for purchase online.
- The Gateway will be open for credentialed media from 4:00-5:00am on Practice Days.
- No media will be allowed through the Gateway after 5:00am.
- Uphill traffic at the Start Line closes at 4:45am.
  - It is recommended to arrive at the Gateway prior to 4:00am for those who wish to view practice from above the Start Line Area.
- All credentialed media must park in one of the following areas along the course (Start Line, Glen Cove, and Devils Playground).
- No media will be allowed to move up and down the course (except on foot) once parked.
- No media allowed on the Summit during practice unless previously arranged with PPIHC.

## **PIKES PEAK RACE DAY ACCESS FOR CREDENTIALLED MEDIA:**

- All credentialed media will have an opportunity to enter through the Gateway, prior to spectator access, from 2:00-3:00am.
  - It is advisable for all accredited media members to arrive at the Gateway prior to 2:00am.
  - No cars will be allowed above the Start Line after 7:00am.
    - The Start Line could be closed to vehicles before 7:00am, if parking above the Start Line is full.
  - Any member of the media arriving without a credential will be required to purchase a spectator ticket to gain access to the event and will not be allowed to enter the Gateway until it opens to the general public at 3:00am.
- All credentialed media must park in designated spectator areas along the course (Start Line, Halfway Picnic Grounds, Ski Area, Glen Cove, Cove Creek and Devils Playground).
  - No media will be allowed to move up and down the course (except on foot) once parked.
  - No media will be allowed to park above Devils Playground unless previously arranged with the PPIHC.
- Take Off Area/Start Line Access:
  - The Start Line has two access control points to allow competitors the space they need to prepare for their run.
    - Credentialed media will be allowed through the first access point (where spectators are not allowed), but will not be allowed through the second access point with the flag man.
    - No members of the media are allowed in the section with the flagman at the Start Line Area.
- Race Course Access:
  - Credentialed media are allowed to walk outside of the PPIHC Spectator Viewing Areas only when their media credential is visible and while wearing the numbered Media Vest provided by the PPIHC.
- Start Line Media Viewing Area:
  - There will be a designated PPIHC Media photography area on the driver's right, between the take-off zone and physical Start Line.

## **SUMMIT ACCESS FOR CREDENTIALLED MEDIA:**

- Due to the unique venue of the race and limited space at the summit of Pikes Peak – America’s Mountain the PPIHC cannot grant access for everyone to cover the race from the summit on Race Day. The PPIHC has reserved two Media Buses with a total of 40 seats to transport accredited **Official Race Media** representatives to the Summit on Race Day.
  - Seats on the buses are first come, first serve so please register in advance by e-mailing Lisa Haight, Event Coordinator and Historian, [Lisa@PPIHC.org](mailto:Lisa@PPIHC.org).
  - Once a spot as been reserved, bus passes will be distributed at credential pickup.
  - The bus will leave from Hotel Eleganté promptly at 4:30am on Sunday, June 24, 2018. It will not wait.
  - Only those with bus passes and PPIHC Media Credentials will be allowed on the bus.
  - PPIHC staff will be checking credentials to gain access to the bus.
  - The bus will not stop at the Start Line area on the way up to or down from the Summit.

## **PPIHC MEDIA-USE PHOTOS:**

- The PPIHC will offer at least 10 (ten) images from each of the PPIHC sanctioned events captured by the PPIHC’s Official Photography Group lead by Larry Chen, to be used solely for editorial purposes. These high-resolution, non-watermarked images will be available during Race Week at: <https://www.dropbox.com/sh/7m1rkcc1vko3081/AAA8UeQTXfWiHM7gFlqKCbt1a?dl=0>

## **COMPETITOR ACCESS OPPORTUNITIES:**

- Technical Inspection at The Broadmoor World Arena on Monday, June 18, 2018 from 9am to 3pm and is open to all members of the media.

### **Car Technical Inspection Schedule:**

- 8:30am – Rookie Cars line up for Technical Inspection
- 9:00-10:30am – Rookie Car Competitors and Rookie Orientation Mentors
- 10:30-11:15am – Unlimited Division
- 11:15am-12:15pm – Time Attack Class
- 12:15-12:45pm – Porsche Cayman GT4 Clubsport by Yokohama Class
- 12:45- 1:15pm – Pikes Peak Challenge-Open Wheel Class
- 1:15-2:00pm – Pikes Peak Challenge-Pikes Peak Open Class
- 2:00-2:45pm – Pikes Peak Challenge-Exhibition Class

### **Motorcycle Technical Inspection Schedule:**

- 8:30am – Rookie Motorcycles / Rookie Orientation Mentors line up for Technical Inspection
  - 9:00-10:30am – Rookie Motorcycle Competitors and Rookie Orientation Mentors
  - 10:30-2:30pm – Veteran Motorcycle Competitors
- The 2018 Hall of Fame Induction Ceremony will take place on Thursday, June 21 from 4 to 5 pm in the library at Penrose House, 1661 Mesa Avenue in Colorado Springs.
  - Fan Fest - Held annually on the Friday before Race Day, Fan Fest, presented by Budweiser and Toyo Tires, is Colorado Springs’ largest and most popular street festival. More than 30,000 people gather in the heart of Downtown Colorado Springs to experience this 10-block street party. Join us and see why Fan Fest was voted “Best Downtown Event” by readers of The Gazette in the annual “Best of the Springs” awards.
  - Official PPIHC Awards Ceremony - All accredited members of the media are invited to attend the Official PPIHC Awards Ceremony at 9:00am on Monday, June 25, 2018 (the day after the event).

The awards ceremony will be held at the El Pomar Penrose House Garden Pavilion, behind the Penrose House, at 1661 Mesa Avenue in Colorado Springs.

**MEDIA RULES AND REMINDERS:**

- There is no safe place for media members to be on Pikes Peak. Media must attend and cover the PPIHC at their own risk.
- Members of the media are not allowed to leave unmanned cameras anywhere on the course.
- No one is allowed to stand behind orange fenced areas or other areas PPIHC has designated as high danger.
- The use of drones is prohibited.

## **PPIHC MEDIA SAFETY:**

The PPIHC would like to provide accredited media members with course and competitor access in order to capture the best content possible; however, it must be understood that some locations are not safe and may put your life, and the future of this great motorsports tradition, in jeopardy.

Areas on the outside of a corner are extremely dangerous and you should never capture content from these locations; no camera angle is worth more than your personal safety. If you are caught capturing content in dangerous locations, (for example but not limited to the outside of corners,) the PPIHC will immediately revoke your accreditation (credential and vest) and decline your accreditation for future editions of the PPIHC.

The first photo was taken during a 2015 practice session in the Upper Section and shows a photographer sitting on the outside of a corner. The bottom photo was taken during a 2012 practice session in the Upper Section, where a race vehicle left the road. Not only is the photographer in the top photo shooting from the outside of the corner, but he is doing so while sitting down and without any form of natural barrier that could provide protection if the unexpected were to occur.

Never sit, kneel or position yourself in any way that could limit your ability to react as quickly as possible. Keep as many natural barriers like boulders and trees between the racing surface and yourself at all times. Always have an escape route in mind, and position yourself at a higher elevation than the racing surface.

The PPIHC is one of the most unique sporting events in the world and requires strict safety regulations. We strive to allow as much access as possible to accredited members of the media and ask for your cooperation in adhering to our safety regulations and policing unsafe behavior. If you see someone disregarding these policies, please:

- Politely get their attention and tell them their safety is in jeopardy and they need to relocate to a less dangerous location.
- If they do not react to your request, capture photo or video evidence of their behavior and record their media vest number.
- Find the nearest PPIHC Official and alert them to the unsafe behavior.
- Send the photos and/or videos to Lisa Haight [lisa@ppihc.org](mailto:lisa@ppihc.org) as soon as possible.

Thank you for your cooperation!



## **2018 MEDIA RACE WEEK SCHEDULE: (Subject to Change)**

### **Sunday, June 17**

4:00pm-8:00pm: Merchandise Sales (Hotel Eleganté)

### **Monday, June 18 (Technical Inspection)**

8:00am-7:00pm: Merchandise Sales (Hotel Eleganté)

9:00am-3:00pm: Technical Inspection (The Broadmoor World Arena, Colorado Springs)

9:00am-3:00pm: Merchandise and Ticket Sales (The Broadmoor World Arena, Colorado Springs)

5:00pm: Mandatory media meeting/credential pickup (Hotel Eleganté - Aspen Room)

(Media do not need to attend media meeting more than once)

### **Tuesday, June 19 (Motorcycle Qualifying - Car Group A & B Practice)**

4:00am-5:00am: Gateway open to credentialed individuals and spectators

(A limited number of spectator tickets will be sold online only)

4:45am: Official PPIHC Start Line closes to uphill traffic

5:30am-8:30am: Practice/Qualifying (Pikes Peak – America’s Mountain)

11:00am-2:00pm: Merchandise Sales (Hotel Eleganté)

11:00am-4:00pm: Race Day Ticket Sales (Hotel Eleganté – Breckenridge Room)

6:00pm: Mandatory media meeting/credential pickup (Hotel Eleganté – Aspen Room)

(Media do not need to attend media meeting more than once)

### **Wednesday, June 20 (Car Group A Qualifying - Car Group B and Motorcycle Practice)**

4:00am-5:00am: Gateway open to credentialed individuals and spectators

(A limited number of spectator tickets will be sold online only)

4:45am: Official PPIHC Start Line closes to uphill traffic

5:30am-8:30am: Practice/Qualifying (Pikes Peak – America’s Mountain)

11:00am-2:00pm: Merchandise Sales (Hotel Eleganté)

11:00am-4:00pm: Race Day Ticket Sales (Hotel Eleganté – Breckenridge Room)

6:00pm: Mandatory media meeting/credential pickup (Hotel Eleganté - Aspen Room)

(Media do not need to attend media meeting more than once)

### **Thursday, June 21 (Car Group B Qualifying - Car Group A and Motorcycle Practice)**

4:00am-5:00am: Gateway open to credentialed individuals and spectators

(A limited number of spectator tickets will be sold online only)

4:45am: Official PPIHC Start Line closes to uphill traffic

5:30am-8:30am: Practice/Qualifying (Pikes Peak – America’s Mountain)

11:00am-2:00pm: Merchandise Sales (Hotel Eleganté)

11:00am-4:00pm: Race Day Ticket Sales (Hotel Eleganté – Breckenridge Room)

7:00pm: Mandatory media meeting/credential pickup (Hotel Eleganté - Aspen Room)

(Media do not need to attend media meeting more than once)

### **Friday, June 22 (PPIHC Sanctioned Optional Practice Day / Test and Tune)**

4:00am-5:00am: Gateway open to credentialed individuals and spectators

(A limited number of spectator tickets will be sold online only)

4:45am: Official PPIHC Start Line closes to uphill traffic

5:30am-8:30am: Sanctioned Practice (Pikes Peak – America’s Mountain)

11:00am-4:00pm: Race Day Ticket Sales (Hotel Eleganté – Breckenridge Room)

5:00pm: Final Competitor List / Run Order announced

5:00pm-10:00pm: Fan Fest, Downtown Colorado Springs – Free and open to the general public

5:00pm-10:00pm: Merchandise and Ticket Sales (Fan Fest, Downtown Colorado Springs)



### **Saturday, June 23 (Set-Up Day)**

11:00am-4:00pm: Race Day Ticket Sales (Hotel Eleganté - Breckenridge Room)

3:00pm: Mandatory media meeting/credential pickup (Hotel Eleganté - Aspen Room)  
(Media do not need to attend media meeting more than once)

### **Sunday, June 24 (Race Day)**

2:00am: Gateway opens for all credentialed Officials, Competitors, Crew and Media only. Once at the Gateway, all competitors and credentialed personnel must enter through Gate #1 or #2. Oversized/larger vehicles must enter through gate #3. No two-way uphill traffic at any point for anyone.

3:00am: Gateway opens to the public. All spectators must use the uphill lane and enter through any of the three gates available. No two-way uphill traffic at any point for anyone.

3:00am-10:00am: Will Call ticket pick up at the Gateway (No day-of ticket sales)

3:00am-12:00pm: Pre-purchased ticket holders and credentialed personnel will be admitted at the Gateway

4:00am: Media Bus to the Summit of Pikes Peak – America's Mountain departs Hotel Eleganté

6:00am-End of the Race: Merchandise Sales at the Start Line

6:30am: Non-denominational church service (in the clearing behind Race Control) (*optional*)

7:00am: Riders/Drivers Meeting (location TBD)

7:30am: Motorcycles Grid

8:00am: Green Flag is dropped (Start of the 96<sup>th</sup> Running)

### **Monday, June 25 (Awards Ceremony)**

9:00am: Official PPIHC Awards Ceremony - The awards ceremony will be held at the El Pomar Foundation Pavilion, behind the Penrose House at 1661 Mesa Avenue in Colorado Springs.

### **Practice/Qualifying Sections Defined:**

- Upper Section – [Devils Playground](#) to the [Summit](#)
- Middle Section - [Glen Cove](#) to [16 Mile](#)
- Bottom Section - From the [Start Line](#) to S/B below [Glen Cove](#) (Official Qualifying Section)

### **ADDRESSES AND LINKS:**

Tech Inspection - [3185 Venetucci Blvd. Colorado Springs, CO 80906](#)

Hotel Eleganté - [2886 S Circle Dr, Colorado Springs, CO 80906](#)

Fan Fest - [Intersection of Pikes Peak Ave & Tejon St.](#)

Race Day - [Pikes Peak – America's Mountain](#)

The Pikes Peak Highway - [Gateway](#)

The Penrose House - [1661 Mesa Avenue, Colorado Springs, CO 80906](#)

## **Race Week Practice Schedule and Groups:**

### Practice/Qualifying Day #1: June 19<sup>th</sup>

Upper Section: Group A

Middle Section: Group B

Bottom Section (Qualifying): All Motorcycle Divisions and Classes

### Practice/Qualifying Day #2: June 20<sup>th</sup>

Upper Section: Group B

Middle Section: All Motorcycle Divisions and Classes

Bottom Section (Qualifying): Group A

### Practice/Qualifying Day #3: June 21<sup>st</sup>

Upper Section: All Motorcycle Divisions and Classes

Middle Section: Group A

Bottom Section (Qualifying): Group B

### Optional Sanctioned Practice: June 22<sup>nd</sup>

Upper Section: Group A

Middle Section: Group B

Bottom Section: All Motorcycle Divisions and Classes

## **Qualifying/Practice Sections Defined:**

- Upper Section – [Devils Playground](#) to the [Summit](#)
- Middle Section - [Glen Cove](#) to [16 Mile](#)
- Bottom Section - From the [Start Line](#) to S/B (switchback) below [Glen Cove](#) (Official Qualifying Section)

## **Groups:**

- Group A: Unlimited, Open Wheel, Pikes Peak Open
- Group B: Exhibition, Time Attack 1, Porsche Cayman GT4 Clubsport by Yokohama

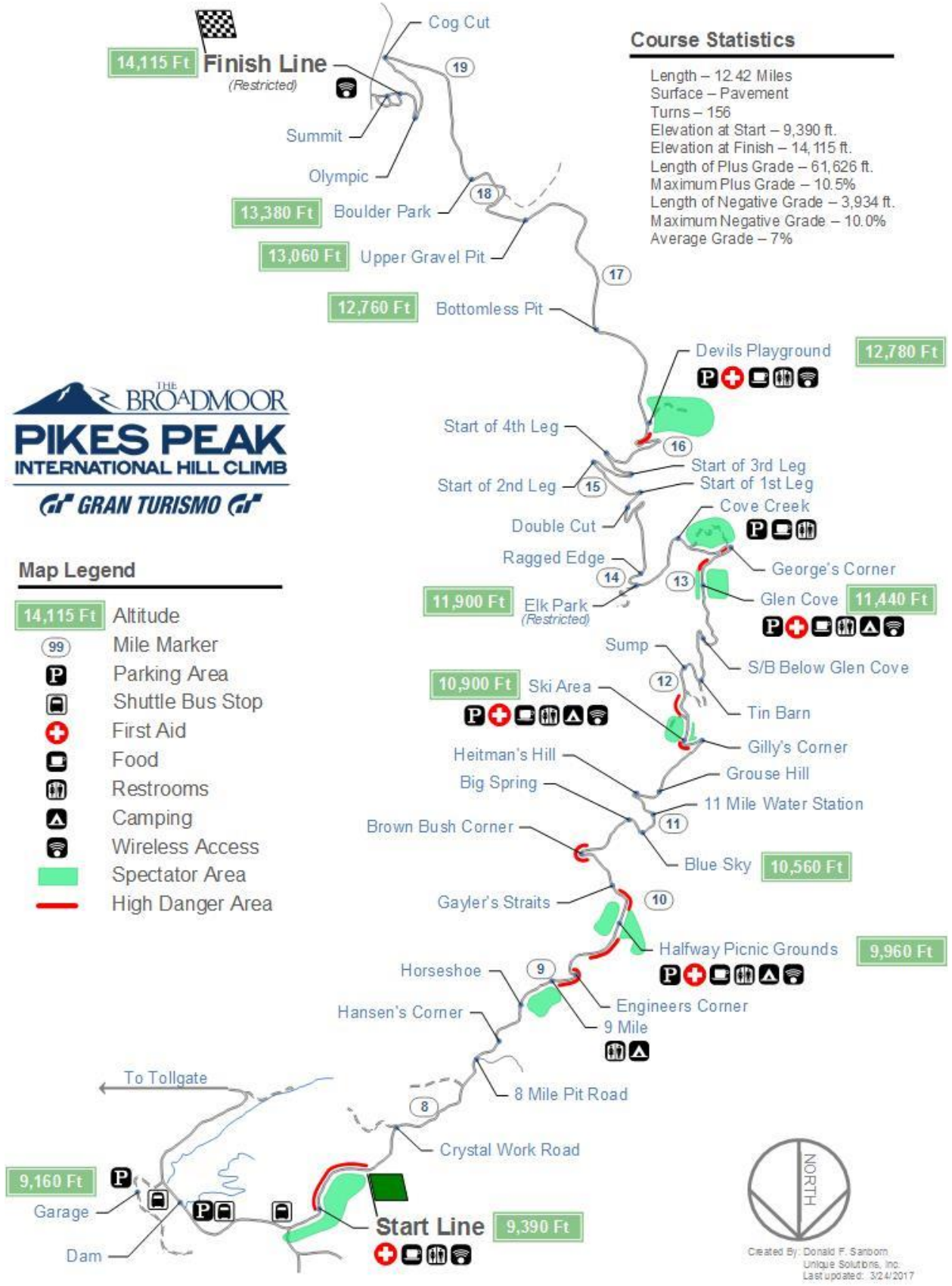


**Map Legend**

- 14,115 Ft Altitude
- 99 Mile Marker
- P Parking Area
- ☺ Shuttle Bus Stop
- + First Aid
- 🍷 Food
- 🚻 Restrooms
- ⛺ Camping
- 📶 Wireless Access
- Spectator Area
- High Danger Area

**Course Statistics**

Length – 12.42 Miles  
 Surface – Pavement  
 Turns – 156  
 Elevation at Start – 9,390 ft.  
 Elevation at Finish – 14,115 ft.  
 Length of Plus Grade – 61,626 ft.  
 Maximum Plus Grade – 10.5%  
 Length of Negative Grade – 3,934 ft.  
 Maximum Negative Grade – 10.0%  
 Average Grade – 7%



Created By: Donald F. Sanborn  
 Unique Solutions, Inc.  
 Last updated: 3/24/2017

### **RACE WEEK INFORMATION, RESULTS & PRESS RELEASES:**

- Practice Day times will be posted on PPIHC.org as quickly as possible following each practice session.
- The PPIHC will send out Unofficial Race Results as soon as they are available. Live timing will be available on PPIHC.org; the results may not become official until the Monday following the race.
- The PPIHC issues press releases throughout the year. If you are not getting these e-mailed to you and would like to receive them, please contact Lisa Haight, Event Coordinator and Historian, [Lisa@PPIHC.org](mailto:Lisa@PPIHC.org).

### **OFFICIAL PPIHC IOS AND ANDROID APP:**

- Download the Official PPIHC App on your favorite [iOS](#) and [Android](#) devices.

### **HELPFUL LINKS:**

- 2018 Run Order Format:  
The Official Run Order will be found on PPIHC.org by 5:00pm on June 22<sup>nd</sup>.
- 2017 Results:  
<http://ppihc.org/wp-content/uploads/2017-Overall-Results.pdf>
- PPIHC Records:  
<http://ppihc.org/wp-content/uploads/2017/12/Race-Records.pdf>
- Live Pikes Peak Summit Cameras:  
<https://parks.coloradosprings.gov/pikespeak>
- Live Pikes Peak Summit Weather:  
<http://www.cograilway.com/Summit/WeatheratSummitB.htm>

### **PPIHC MEDIA LICENSING AND COMMERCIAL RIGHTS POLICY:**

- [http://ppihc.org/wp-content/uploads/2018-PPIHC-Licensing-Information-for-Spectators.Media\\_.Crew\\_.pdf](http://ppihc.org/wp-content/uploads/2018-PPIHC-Licensing-Information-for-Spectators.Media_.Crew_.pdf)