



016 - 2020 Practice and Qualifying Groups Rookie Practice Requirement

Practice Days: Waiver Requirements/COVID/Parking Course Conditions & Rules/Important Notes

Posted Online: January 14, 2020

Last Updated: July 27, 2020

(Subject to Change)

Practice and Qualifying Groups

Qualification times will be based on the competitor's best time on the Lower Section during Qualifying held Tuesday, August 25 – Thursday, August 27. Run order will be determined based on qualification times.

Race Week Practice Schedule and Groups:

Practice/Qualifying Day #1: Tuesday, August 25th

Upper Section: Time Attack #1, Unlimited, Porsche Pikes Peak Trophy by Yokohama

Middle Section: Pikes Peak Open

Lower Section (Qualifying): Exhibition & Open Wheel

Practice/Qualifying Day #2: Wednesday, August 26th

Upper Section: Exhibition & Open Wheel

Middle Section: Time Attack #1, Unlimited, Porsche Pikes Peak Trophy by Yokohama

Lower Section (Qualifying): Pikes Peak Open

Practice/Qualifying Day #3: Thursday, August 27th

Upper Section: Pikes Peak Open

Middle Section: Exhibition & Open Wheel

Lower Section (Qualifying): Time Attack #1, Unlimited, Porsche Pikes Peak Trophy by Yokohama

Optional Sanctioned Practice: Friday, August 28th

Upper Section: Time Attack #1, Unlimited, Porsche Pikes Peak Trophy by Yokohama

Middle Section: Pikes Peak Open

Lower Section: Exhibition & Open Wheel

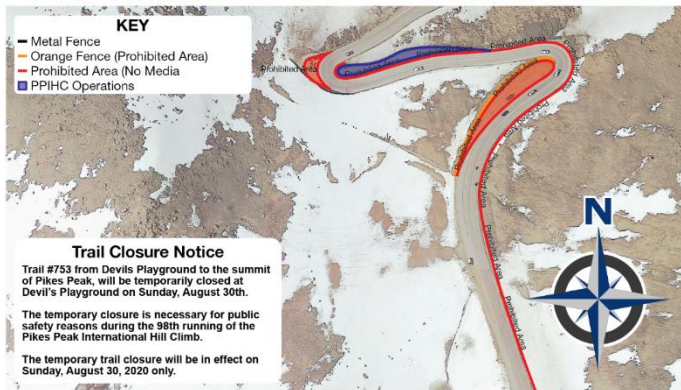
Friday, August 28 - (PPIHC Sanctioned Optional Practice Day)

- This practice session is optional. There is no qualifying. You do not need to sign up in advance and there is no fee. It is simply a final opportunity for those competitors wishing to make additional practice runs. The decision whether or not to practice on that day is up to each competitor. The format will be the same as the previous practice days.

Qualifying/Practice Sections Defined:

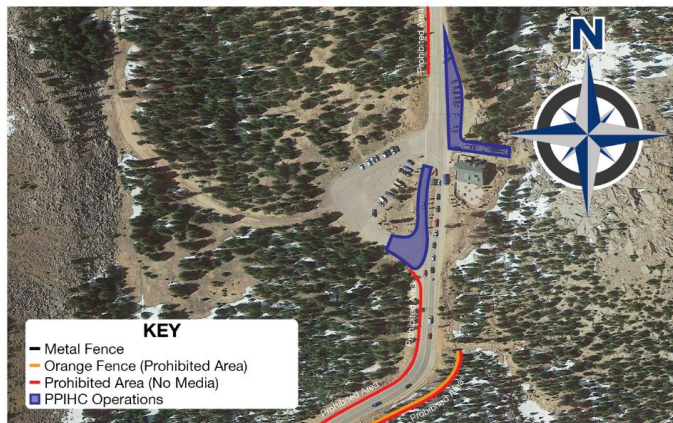
- Upper Section – Devils Playground to the Summit

DEVILS PLAYGROUND



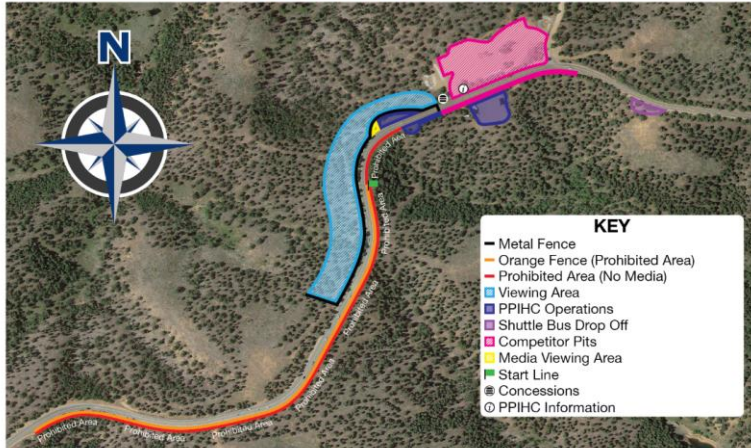
- Middle Section - Glen Cove to 16 Mile

GLEN COVE



- **Lower Section - Start Line to the S/B (switchback) below Glen Cove**
(This is the Official Qualifying Section)

START LINE



NOTES

Media can NOT shoot from the orange and red areas along driver's left.

The 2020 PPIHC competitor list can be found [HERE](#)

Rookie Practice Requirement

As a reminder, the following rule in the 2020 Rule Book will be strictly enforced for the 2020 PPIHC:

- Part VI – Practice and Race Day
6.9 - Rookie competitors must practice every section of the race course. A Rookie's failure to practice one or multiple sections of the race course will result in their disqualification from the event.

Practice Days: Waiver Requirement/Schedule/Parking Course Conditions & Rules/Important Notes

Liability Waiver:

To expedite Gateway entry, and limit sharing clipboards and pens which are difficult to disinfect, please bring a printed and signed copy of our liability waiver (found [HERE](#)) on EACH practice day and hand it to the staff at the Gateway.

Section Arrival Times:

- 3:30 a.m. – Gateway open to Competitors in the Upper Section.
- 3:45 a.m. – Gateway open to Competitors in the Middle Section.
- 4:00 a.m. – Gateway open to Competitors in the Lower Section.

Drivers Meeting:

A MANDATORY drivers meeting will be held **each practice morning** in each section's pits at approximately 4:45 a.m. Roll call will be taken. Competitors may be fined for failure to attend.

COVID-19:

During all PPIHC sanctioned activities, please abide by all PPIHC COVID guidelines, including wearing a face mask or cloth covering at all times unless consistent social distancing of at least 6' can be maintained, using hand sanitizer frequently and limiting group size gathering to no more than 10 (ten) people.

Checkered Flag Reminders:

Space on the Summit is very limited due to the construction project. The area at the Summit immediately following the checkered flag is extremely narrow. In addition to these specific concerns at the Summit, competitors **MUST** slow down after receiving the checkered flag in all sections. Failure to do so could result in a PPIHC fine and/or penalty.

Gran Turismo Windshield/Helmet Visor Banner:

All competitors will be mailed a Gran Turismo windshield/helmet visor banner. All competitors/entries will be responsible for the application of the Gran Turismo banner in the specified location before they are able to take a green flag at Testing, **Practice**/Qualifying or Race Day. Any competitor failing to display the Gran Turismo windshield/helmet visor banner will not be eligible to take a green flag.

Parking

- Lower Section – PPIHC Pits

No competitors are allowed to pit and/or park on any portion of the Pikes Peak Highway road surface at any time, except those who have purchased pit row space. The space belongs to those who have purchased it all week whether or not the owner is practicing on the Lower Section.

All competitors need to be parked and pitted in the designated parking and or pit parking spots. Due to limited parking, please arrange for your crew members to ride together.

- Middle Section – Glen Cove
- Upper Section – Devils Playground

Course Conditions

- Cold asphalt (The course will not be the same on Race Day as it was during practice days.)
- There may be frost, ice or water on the course.
- The paint is slick.
- Watch out for animals on the course.
- Different paving surfaces and heaving in pavement may be present.

- There can be a strong sun glare during the first few runs.
- Space on the Summit is extremely limited due to the construction. The road also has many deep potholes filled with water from the runoff immediately past the checkered flag point. The highway will be working to repair the damage each night, but you need to be aware this will be a hazard.

On-Course Rules

- Follow all race official's directions at all times!
- The two-minute rule will be enforced. A running clock will start after each vehicle has left the starting area and begun a test run. If another run-ready vehicle is not presented at the designated starting area within two minutes, that set of runs will be considered complete and the section's head official will signal for vehicles to return from the finish area to the pits.
- The racing line is white line to white line; do not cut the course.
- If you see a red flag on the course, during any run, stop immediately. No safety crews can or will move until control is sure all drivers on the course are stopped and accounted for.
- If you run/disregard a red flag, expect to be penalized.
- If you are red flagged, wait until Control or an Official releases you.
- Never go downhill unless instructed to do so by Control or an Official.
- If you stop on the course, try to get out of the racing line. If you are blocking the course, walk downhill and notify other competitors. Have another competitor continue uphill and notify a course official.
- If your vehicle is disabled, it may be left on the mountain and not brought down between runs.
- Make sure your towing equipment is in good condition to avoid further delays.
- Competitors must slow down after receiving the checkered flag in all sections. Failure to do so could result in a PPIHC fine and/or penalty.
- During practice, it is common to have two-way traffic on the return trip to the start line or pits. Do not pass other competitors going downhill. Drive slowly.
- All competitors must ride down after the last run at legal highway speed! NO EXCEPTIONS.

Notes and Pointers

- Don't race other competitors, race the mountain.
- MUST be ready to present at the start line ASAP to maximize the number of runs.
- Make all of your runs!
- Prepare yourself for the altitude and stay well hydrated.
- Timing: Upper Section (Hand Timing); Middle & Lower Sections (Live Timing)
- The Upper Section finish line is at the Summit. You will get a checkered flag and then a red flag. Reminder, slow down immediately and watch for road hazards.
- The road is turned over to Pikes Peak - America's Mountain at 9:00am. Competitors must be prepared to depart their designated pit area by 9:30am.
- If competitors wish to spend additional time on Pikes Peak - America's Mountain past 10:00am they must exit the Pikes Peak Highway and re-enter through the Gateway after paying the toll. Only street legal cars (no trailers) will be allowed on the Pikes Peak Highway during public hours and all drivers must obey all posted speed limits and traffic laws. If any competitor is found on the mountain,

without having paid the toll during public hours and/or is cited for violating any traffic laws, they may be subject to a PPIHC penalty and/or fine.