



**GLEN COVE**

**CAMPING**

**SPECTATOR  
GUIDE**

# GLEN COVE FAST FACTS



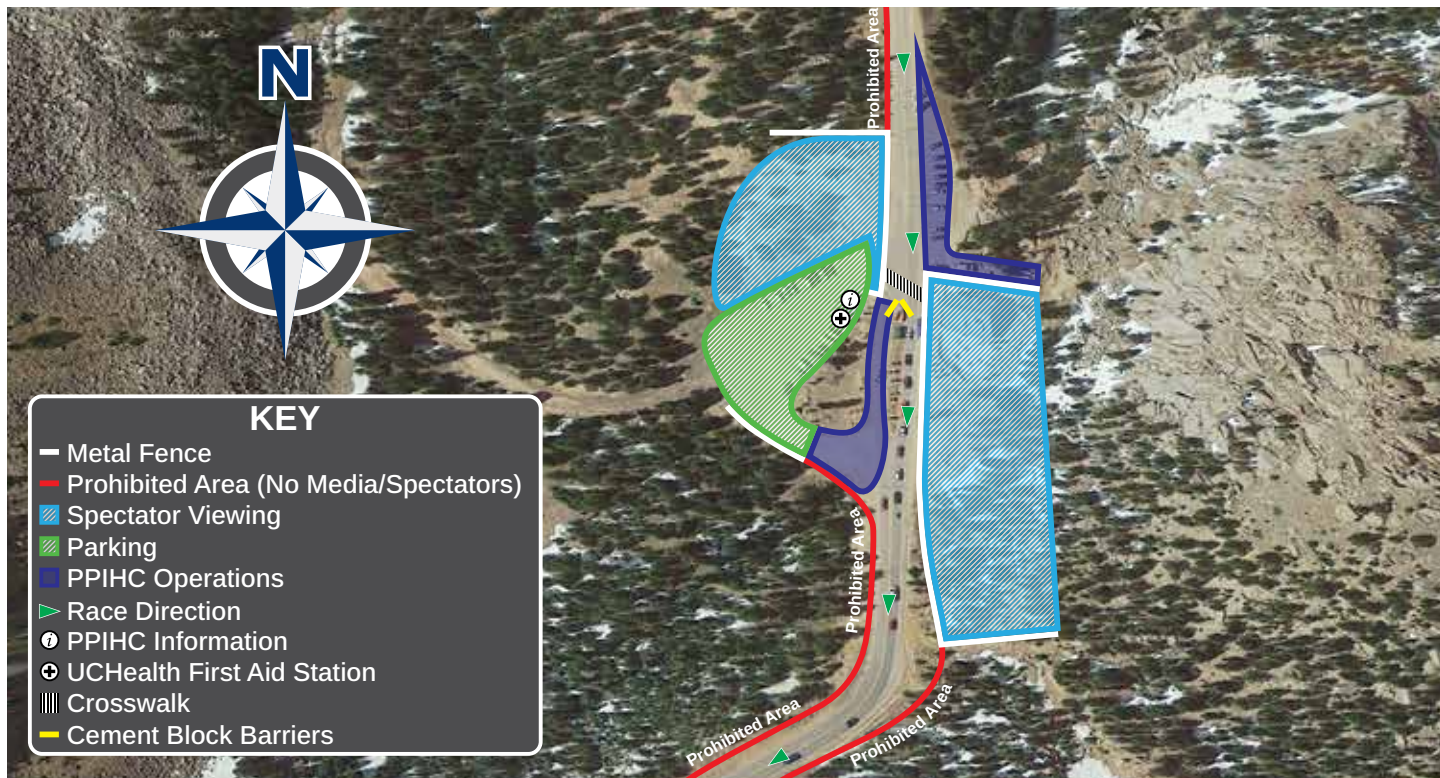
- ▶ Fast straightaway that narrows to a single lane as the drivers begin their climb toward tree line
- ▶ Listen to sounds of race cars bouncing off the mountain sides
- ▶ Viewing on both sides of the course
- ▶ **ONLY** cross at monitored crosswalks
- ▶ Be prepared to climb higher for a better vantage point
- ▶ Access to the Historic Glen Cove Inn and amenities
- ▶ Elevation: 11,440 ft
- ▶ Miles from gateway: 13

Parking managers will be available at each of the designated parking areas. Please follow their directions and direct questions to them.

No spectator parking will be allowed anywhere along the course. Any vehicles found outside of a designated spectator area without a parking pass will be towed.



# MAP & AMENITIES



## SPECTATOR NOTES

Spectators will only be able to view the race from the areas within the metal fencing along driver's right and left. There is absolutely NO spectating outside the metal fenced area. Spectators wanting to view the race from driver's right must cross the crosswalk only when deemed safe by the official monitoring the crosswalk. Media can NOT shoot from the red areas.

## AMENITIES



Parking



Food vendor (weather permitting)



UCHealth First Aid



Portable restrooms and trash cans



Spectator Information tent (race information)



WiFi available for purchase - all areas except 9 Mile and Cove Creek (live timing and race day X (Twitter) feed, [ppihc.org](http://ppihc.org))



Fan Bus - Purchase Necessary (Glen Cove and Devils Playground Only)

# TICKET INFORMATION



Scan the QR code or visit the link  
below to purchase tickets:

[ppihc.org/tickets-camping-permits](https://ppihc.org/tickets-camping-permits)

- 
- ▶ Anyone who is **10 years of age and over** needs a race ticket.
  - ▶ Tickets will **NOT** be sold at the Gateway.
  - ▶ Tickets will **NOT** be sold in-person at any PPIHC event – **ONLINE ONLY.**
  - ▶ Be prepared to show your digital or printed ticket at the Gateway.
  - ▶ Gateway closes to spectators at 10am on Race Day (even with pre-purchased tickets).
  - ▶ No RVs admitted on Race Day.

# CHECK-IN & ARRIVAL INSTRUCTIONS

## GATEWAY OPENS TO CAMPERS:

JUNE

20

OPEN:

1:00 PM

CLOSE:

6:00 PM

- ▶ Campers **will not be allowed to line up at the Gateway before 1:00pm on Saturday.** This will be strictly enforced so regular tourist traffic is not blocked. Early arrivals will be turned around.
- ▶ Campers will **NOT** be able to park, stage, or wait in the Santa's Workshop parking lot.
- ▶ All campers must enter through **Gate 3 (Far Right Lane).**
- ▶ Camping permits are restricted to the camping site designated on the front of the permit and will be checked at each area.



**GATE 3**

**LENGTH RESTRICTION:** Maximum vehicle length is 25' and will be strictly enforced.

# CAMPING INFORMATION

## PERMIT INFORMATION

- ▶ Limited camping permits for Saturday night, June 20th are available for \$300 per space. These do sell out.
- ▶ One camping permit required per car or motorcycle.
- ▶ **REMEMBER:** Each camper must also purchase a race day spectator ticket.
- ▶ All campers must view the race from their camping location.  
No moving between areas.

## RESTRICTIONS AND REMINDERS

These are not traditional campgrounds.

- ▶ Be prepared for dry camping.
- ▶ NO RV hookups.
- ▶ NO permanent facilities.
- ▶ You will need to pack in / pack out all needed supplies.
- ▶ You may be parked close to another camper, space is limited.
- ▶ There are no provisions to dispose of gray or black water. This waste must be disposed of at an approved sanitary disposal (not available on Pikes Peak).
- ▶ Open fires are prohibited.
- ▶ Gas and propane stoves with shut-off valves are allowed (pending any local restrictions, laws or bans).

**No towable trailers of any length/kind will be allowed.**  
**Maximum vehicle length permitted: 25'**

# INSIDER TIPS

# PACKING LIST

Expect the unexpected on Pikes Peak. A typical June day can start out very sunny and warm, and turn intensely cold with rain, snow, fog or hail.

## 2026 PPIHC SUGGESTED ESSENTIALS

- ☐ Blankets
- ☐ Layers (coats, hats, gloves)
- ☐ Sturdy shoes
- ☐ Sunscreen
- ☐ Coolers with food and drink
- ☐ Water (lots of water!)
- ☐ Cash for food and merch vendors
- ☐ Portable AM/FM Radio  
(KRDO 1240 AM)
- ☐ First Aid Kit
- ☐ Flashlight
- ☐ Camping chairs
- ☐ Sunglasses
- ☐ Umbrella





# RESTRICTIONS & REMINDERS

## RESTRICTIONS



No pets



No off-road vehicles  
(bicycles, dirt bikes, ATV's, etc.)



No open fires



No drones



No firearms



No tree stands or lean-tos



No fireworks

## REMINDERS



We race rain or shine.



Make sure your car is full of gas.



Dress in layers.



Use a low gear on your descent.  
Hot Brakes Fail!



Lightning is common at higher elevations. In the event of lightning or hail, take shelter in your vehicle.



Apply sunscreen frequently.



Drink plenty of water.



Seek help for altitude-related illness.



# SAFETY

- ▶ All spectators must remain behind any fence, or otherwise marked areas that outline the designated viewing areas.
- ▶ Any area marked as **PROHIBITED AREA** is a high danger area.
- ▶ **Do NOT stand within prohibited areas under any circumstance.**
- ▶ Everyone in spectator viewing areas is encouraged to have some sort of barrier protection if possible (rocks, trees, and vehicles etc.). Do not stand or sit where a vehicle might strike you. For those who cannot find barrier protection, it is recommended to enjoy the race from higher ground, if possible, to elevate yourself from the race course.
- ▶ Each spectator is expected to obey requests from PPIHC Race Officials, Staff (including volunteers), Pikes Peak-America's Mountain Park Rangers, US Forest Service, First Responders, and Law Enforcement.
- ▶ The PPIHC is an exciting event for the whole family, but it can be unpredictable. Bring the kids but keep them under close supervision.
- ▶ Stay off and away from hay bales.
- ▶ No movement is allowed between Spectator Viewing Areas.



**View Accident Waiver  
and Release of Liability**

# REMINDER TO SIGN THE SPECTATOR WAIVER

Once you purchase tickets to the event, you will be directed to sign the spectator waiver.



Scan the QR code or visit the link  
below to sign the waiver:

**[trackwaiver.com/waiver/pikes-peak](https://trackwaiver.com/waiver/pikes-peak)**

Every person in the vehicle needs to sign the waiver.  
These will be verified at the Gateway.

# REMINDER

# LEAVE NO TRACE

## PRESERVATION

The Pikes Peak International Hill Climb is committed to preserving Pikes Peak's beautiful environment, which has provided a thrilling setting for the Race to the Clouds for 100+ years. We have done everything possible to prevent any negative impact on these spectacular surroundings and encourage spectators to do the same by observing these principles of "Leave No Trace."

## PACK IT IN / PACK IT OUT

Pack It In / Pack It Out: Please clean up your viewing area before you leave. Take your trash with you until you can dispose of it properly. We encourage recycling.

## TREAD LIGHTLY

Avoid fragile vegetation. Keep wildlife wild. Stick to trails. Stay off tundra above timberline. No rock climbing. No trench digging to divert water.



**Comply with all Pikes Peak – America's Mountain and US Forest Service personnel instructions.**

# REMINDER PHOTO POLICY



The PPIHC owns all rights for videos/photos that are taken and/or captured by anyone attending the race, including spectators.

Spectators cannot resell any video/photos without permission from the PPIHC. Please direct inquiries to **[information@ppihc.org](mailto:information@ppihc.org)**.



# POST RACE PARADE OF CHAMPIONS



- ▶ At the completion of the race, spectators will be allowed to stand outside of the fences at their own risk (but behind the white lines of the road) for the Parade of Champions.
- ▶ Competitors will slowly pull into the area, closely packed up.
- ▶ **Do not approach a moving car!** Do not touch cars or drivers.
- ▶ Vehicles will slowly move through the area as competitors wave to the fans.
- ▶ **Loud cheers from the fans are encouraged!**
- ▶ Parade will then proceed to the next spectator area.

# POST RACE

Law Enforcement will release each spectator area.

Once all competitors have descended from the summit, spectators will be released from the top of the mountain to the bottom.

Downhill traffic - use **BOTH** lanes from Devils Playground to Crowe Gulch, approximately 3 – 4 miles below Start Line, where traffic merges into one lane.

## SPECTATOR AREA RELEASE ORDER

1. Devils Playground (follows Parade of Champions)
2. Cove Creek (follows Devils Playground last car)
3. Glen Cove (follows Cove Creek last car)
4. Ski Area (follows Glen Cove last car)
5. Halfway Picnic Grounds (follows Ski Area last car)
6. 9 Mile (follows Halfway Picnic Grounds last car)

All traffic will be directed East onto Highway 24. **No left turns.**



Reminder: Use a low gear on your descent.  
***Hot brakes fail!***

# GETTING TO PIKES PEAK – AMERICA'S MOUNTAIN

## FROM THE COLORADO SPRINGS AIRPORT (COS)

**Official Airport of the Pikes Peak International Hill Climb – they're Colorado's small airport. Small means small lines, small walks to gates, and small waits, but big options on flights and routes to major hubs.**



- ▶ Exit the Airport on Milton Proby Parkway/Drennan Road
- ▶ After approximately 4 miles, turn left on South Academy Blvd.
- ▶ In approximately 1.8 miles, merge onto I-25 North and continue for approximately 5.7 miles
- ▶ Take Exit #141 for US-24/West Cimarron St. and continue West on US-24 for about 9.5 miles
- ▶ Turn left onto Fountain Avenue and continue for approximately 0.3 miles
- ▶ Take a slight left to continue onto Pikes Peak Highway

## FROM DENVER INTERNATIONAL AIRPORT (DEN)

- ▶ Exit the airport on Peña Blvd.
- ▶ Take E-470 South (toll road) for about 34 miles
- ▶ Exit onto I-25 Southbound to Colorado Springs
- ▶ In approximately 55 miles, take Exit #141 for US-24/West Cimarron St.
- ▶ Continue West on US-24 for about 9.5 miles
- ▶ Turn left onto Fountain Avenue and continue for approximately 0.3 miles
- ▶ Take a slight left to continue onto Pikes Peak Highway

Scan the QR code for  
Google Maps Directions to  
the Pikes Peak - America's  
Mountain Toll Gate



# WHO WILL YOU SEE ON THE MOUNTAIN?

It takes hundreds of committed people from our Community to make this race happen! Please be respectful and say **THANK YOU!**



- ▶ Competitors and Crew Members
- ▶ PPIHC Race Officials, Safety Team and Staff
- ▶ Volunteers – Crosswalks and Parking Areas
- ▶ Pikes Peak – America's Mountain Staff
- ▶ US Forest Service
- ▶ El Paso and Teller County Sheriff
- ▶ Search and Rescue
- ▶ Local Fire Departments
- ▶ First Aid Volunteers
- ▶ Media - Photographers and Videographers
- ▶ Merchandise/Souvenir Sales Team
- ▶ Food Vendors
- ▶ Private Security
- ▶ Wildlife



# PPIHC LINGO

**104TH RUNNING** – The 104th race on Pikes Peak. The race was started in 1916, but no competition was held during WWI and WWII.

**COG RAILWAY** – Historic railway to the summit of Pikes Peak. Open to the public on race day.

**CRYSTAL RESERVOIR** – Shuttle pickup location and visitors center below the Start Line.

**FAN FEST** – Street festival welcoming 35,000 fans on Friday night prior to the race in downtown Colorado Springs.

**FAMILY PACK** – A ticket admitting 2 or more spectators in a single vehicle – family or friends!

**GATEWAY** – Entrance to Pikes Peak – America's Mountain. Tickets will be checked here.

**GEAR DOWN** – Using a low gear when driving down the mountain to keep brakes from failing due to overheating.

**GREEN FLAG** – Signals to the driver they may begin their run.

**KING OF THE MOUNTAIN** – Each year's driver with the overall fastest time.

**LAUNCH AREA** – Starting grid staging prior to taking the green flag.

**OPENING CEREMONIES** – Pre-race driver's meeting, National Anthem, and invocation.

**OPEN FIRES** – A flame without an on/off switch – prohibited on Pikes Peak.

**PARADE OF CHAMPIONS** – Post-race parade of competitors returning from the Summit to the Pit area.

**PPIHC** – Pikes Peak International Hill Climb.

**QUALIFYING** – A competitor's fastest time from the Start Line to Glen Cove, this determines race day run order.

**RACE DIRECTOR** – Directs on-course action on race day.

**ROOKIE** – First time competitor on Pikes Peak / Never taken a green flag.

**RUN ORDER** – The order in which drivers take the green flag on race day.

**SANTA'S WORKSHOP** – Colorado amusement park just below the Gateway.

**START LINE** – Timing each competitor's run begins here.

**SUMMIT / FINISH LINE** – 14,115' top of Pikes Peak, timing ends here.

**SWITCHBACKS / "Ws"** – Tight hairpin turns below Devils Playground.

**TECH INSPECTION** – Pre-race event on the Monday of Race Week, held at the Broadmoor World Arena to certify safety and legality of vehicles.

**TREE LINE** – The elevation in which trees no longer grow, around 11,500 ft. in Colorado.

**WAIVER** – Insurance mandated release of liability.

# THANK YOU

## TO OUR MAJOR SPONSORS

THE  
BROADMOOR

**GRAN TURISMO®**  
THE REAL DRIVING SIMULATOR

**TOYO  
TIRES®**

**ACURA**  
PRECISION CRAFTED PERFORMANCE

**Mobil 1™**

**Perkins Motors**  
CHRYSLER DODGE JEEP RAM

**B.R.M.**  
..Chronographes..



# GEAR UP FOR RACE DAY

## JUNE 21

We'll see you there!

FOLLOW PPIHC  
ON SOCIAL MEDIA



@PikesPeakHillClimb



@PPIHC