



PITS / TURN 1

SPECTATOR **GUIDE**

PITS / TURN 1

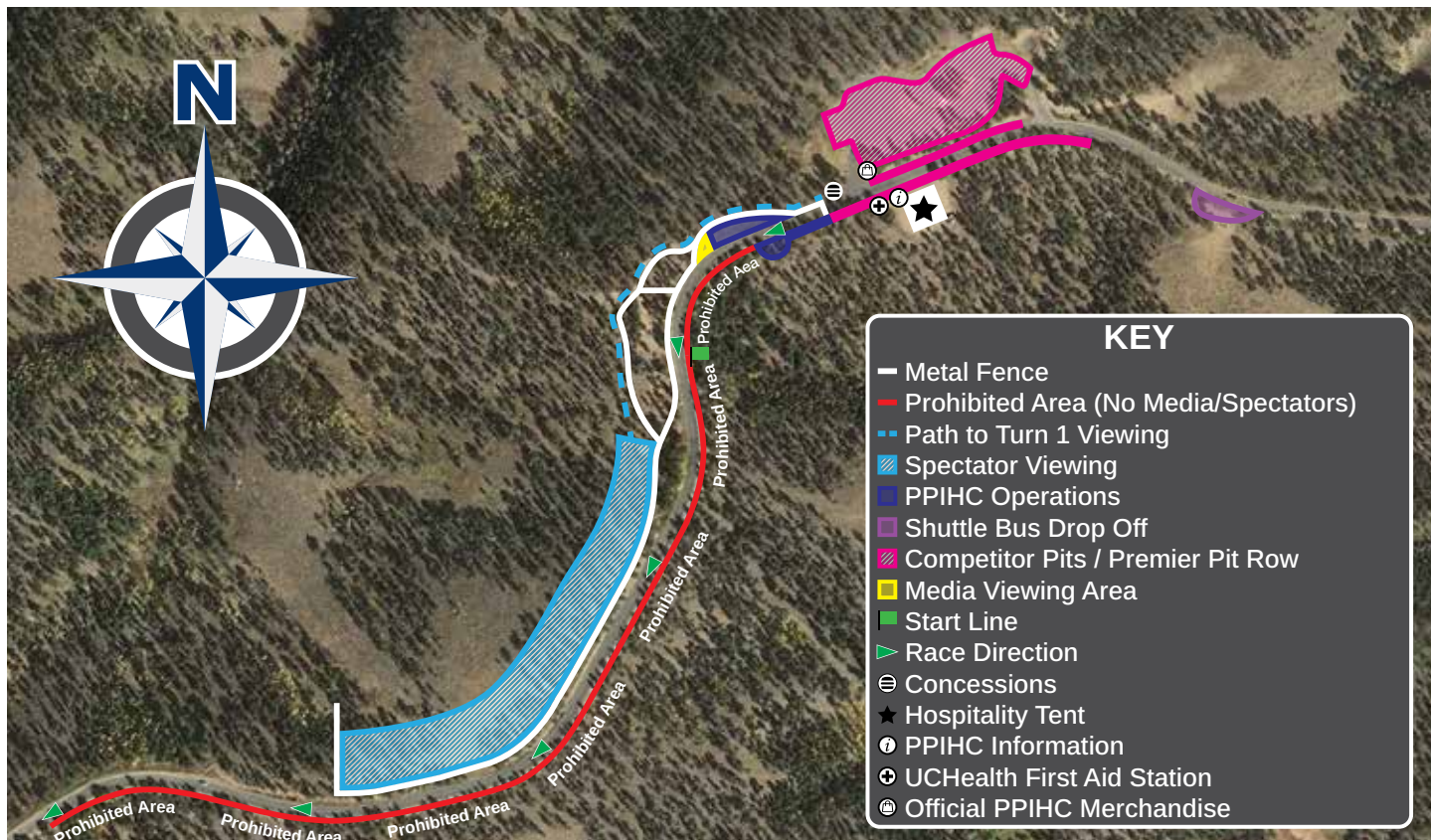
FAST FACTS



- ▶ Access to competitor pits and sponsor activations, children must be accompanied by an adult in these areas
- ▶ Arrive late (but before 10am) and leave anytime
- ▶ Visit vendor booths
- ▶ Watch opening ceremonies (6:30am)
- ▶ Enjoy live stream/live timing on big screen
- ▶ View 1st mile of race course (accessed by foot, must walk through forest terrain)
- ▶ Lower elevation: 9,390ft
- ▶ Miles from the Gateway: 7

No spectator parking will be allowed anywhere along the course. Any vehicles found outside of a designated spectator area without a parking pass will be towed.

MAP & AMENITIES



SPECTATOR NOTES

Spectators will only be able to view the race from the areas within the metal fencing along driver's right and left. There is absolutely NO spectating outside the metal fenced area. Spectators are not allowed to walk through the Pits. Media can NOT shoot from the red areas.

AMENITIES



Parking



Parking Shuttle



Food vendor (weather permitting)



UCHealth First Aid



Portable restrooms and trash cans



Spectator Information tent (race information)



Merchandise (Pits/Turn 1, Halfway Picnic Grounds, Devils Playground)



WiFi available for purchase - all areas except 9 Mile and Cove Creek (live timing and race day X (Twitter) feed, ppihc.org)

TICKET INFORMATION



Scan the QR code or visit the link
below to purchase tickets:

ppihc.org/tickets-camping-permits

-
- ▶ Anyone who is **10 years of age and over** needs a race ticket.
 - ▶ Tickets will **NOT** be sold at the Gateway.
 - ▶ Tickets will **NOT** be sold in-person at any PPIHC event – **ONLINE ONLY.**
 - ▶ Be prepared to show your digital or printed ticket at the Gateway.
 - ▶ Gateway closes to spectators at 10am on Race Day (even with pre-purchased tickets).
 - ▶ No RVs admitted on Race Day.

RACE DAY

ARRIVAL INFORMATION

**Recommended arrival time
for Pits / Turn 1 Viewing:**

4:30 AM

**PIKES PEAK
- AMERICA'S
MOUNTAIN
GATEWAY**



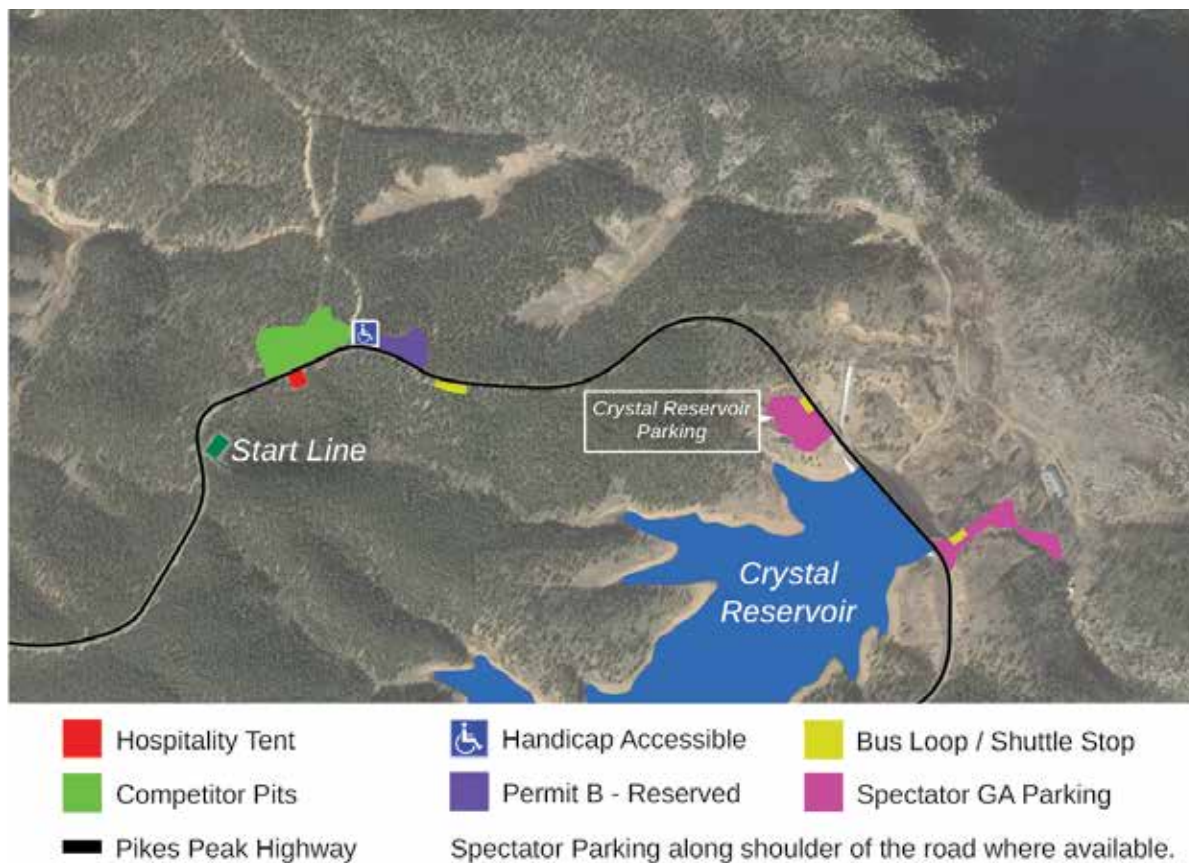
**SANTA'S
WORKSHOP**



- ▶ Race starts at 7:30am (weather permitting)
- ▶ You are guaranteed a parking spot in your spectator area.
- ▶ If you arrive prior to your recommended arrival time, you will be turned away at Santa's Workshop before 2:00am.

PITS / TURN 1 PARKING

START LINE AREA — SPECTATOR



There is no reserved parking at the Turn 1 / Pits viewing area.

Spectators can park in designated parking areas until full (pink areas on map), then they must be prepared to park along the road and walk uphill to a shuttle stop.

PPIHC and Pikes Peak – America's Mountain Staff will direct you.

Please comply with their instructions.

INSIDER TIPS

PACKING LIST

Expect the unexpected on Pikes Peak. A typical June day can start out very sunny and warm, and turn intensely cold with rain, snow, fog or hail.

2026 PPIHC SUGGESTED ESSENTIALS

- ☐ Blankets
- ☐ Layers (coats, hats, gloves)
- ☐ Sturdy shoes
- ☐ Sunscreen
- ☐ Coolers with food and drink
- ☐ Water (lots of water!)
- ☐ Cash for food and merch vendors
- ☐ Portable AM/FM Radio
(KRDO 1240 AM)
- ☐ First Aid Kit
- ☐ Flashlight
- ☐ Camping chairs
- ☐ Sunglasses
- ☐ Umbrella



RESTRICTIONS & REMINDERS

RESTRICTIONS



No pets



No off-road vehicles
(bicycles, dirt bikes, ATV's, etc.)



No open fires



No drones



No firearms



No tree stands or lean-tos



No fireworks

REMINDERS



We race rain or shine.



Make sure your car is full of gas.



Dress in layers.



Use a low gear on your descent.
Hot Brakes Fail!



Lightning is common at higher elevations. In the event of lightning or hail, take shelter in your vehicle.



Apply sunscreen frequently.



Drink plenty of water.



Seek help for altitude-related illness.

SAFETY

- ▶ All spectators must remain behind any fence, or otherwise marked areas that outline the designated viewing areas.
- ▶ Any area marked as **PROHIBITED AREA** is a high danger area.
- ▶ **Do NOT stand within prohibited areas under any circumstance.**
- ▶ Everyone in spectator viewing areas is encouraged to have some sort of barrier protection if possible (rocks, trees, and vehicles etc.). Do not stand or sit where a vehicle might strike you. For those who cannot find barrier protection, it is recommended to enjoy the race from higher ground, if possible, to elevate yourself from the race course.
- ▶ Each spectator is expected to obey requests from PPIHC Race Officials, Staff (including volunteers), Pikes Peak-America's Mountain Park Rangers, US Forest Service, First Responders, and Law Enforcement.
- ▶ The PPIHC is an exciting event for the whole family, but it can be unpredictable. Bring the kids but keep them under close supervision.
- ▶ Stay off and away from hay bales.
- ▶ No movement is allowed between Spectator Viewing Areas.



**View Accident Waiver
and Release of Liability**

REMINDER TO SIGN THE SPECTATOR WAIVER

Once you purchase tickets to the event, you will be directed to sign the spectator waiver.



Scan the QR code or visit the link
below to sign the waiver:

trackwaiver.com/waiver/pikes-peak

Every person in the vehicle needs to sign the waiver.
These will be verified at the Gateway.

REMINDER

LEAVE NO TRACE

PRESERVATION

The Pikes Peak International Hill Climb is committed to preserving Pikes Peak's beautiful environment, which has provided a thrilling setting for the Race to the Clouds for 100+ years. We have done everything possible to prevent any negative impact on these spectacular surroundings and encourage spectators to do the same by observing these principles of "Leave No Trace."

PACK IT IN / PACK IT OUT

Pack It In / Pack It Out: Please clean up your viewing area before you leave. Take your trash with you until you can dispose of it properly. We encourage recycling.

TREAD LIGHTLY

Avoid fragile vegetation. Keep wildlife wild. Stick to trails. Stay off tundra above timberline. No rock climbing. No trench digging to divert water.



Comply with all Pikes Peak – America's Mountain and US Forest Service personnel instructions.

REMINDER PHOTO POLICY



The PPIHC owns all rights for videos/photos that are taken and/or captured by anyone attending the race, including spectators.

Spectators cannot resell any video/photos without permission from the PPIHC. Please direct inquiries to **information@ppihc.org**.

POST RACE PARADE OF CHAMPIONS



- ▶ At the completion of the race, spectators will be allowed to stand outside of the fences at their own risk (but behind the white lines of the road) for the Parade of Champions.
- ▶ Competitors will slowly pull into the area, closely packed up.
- ▶ **Do not approach a moving car!** Do not touch cars or drivers.
- ▶ Vehicles will slowly move through the area as competitors wave to the fans.
- ▶ **Loud cheers from the fans are encouraged!**
- ▶ Parade will then proceed to the next spectator area.

POST RACE

Law Enforcement will release each spectator area.

Once all competitors have descended from the summit, spectators will be released from the top of the mountain to the bottom.

Downhill traffic - use **BOTH** lanes from Devils Playground to Crowe Gulch, approximately 3 – 4 miles below Start Line, where traffic merges into one lane.

SPECTATOR AREA RELEASE ORDER

1. Devils Playground (follows Parade of Champions)
2. Cove Creek (follows Devils Playground last car)
3. Glen Cove (follows Cove Creek last car)
4. Ski Area (follows Glen Cove last car)
5. Halfway Picnic Grounds (follows Ski Area last car)
6. 9 Mile (follows Halfway Picnic Grounds last car)

All traffic will be directed East onto Highway 24. **No left turns.**



Reminder: Use a low gear on your descent.
Hot brakes fail!

GETTING TO PIKES PEAK – AMERICA'S MOUNTAIN

FROM THE COLORADO SPRINGS AIRPORT (COS)

Official Airport of the Pikes Peak International Hill Climb – they're Colorado's small airport. Small means small lines, small walks to gates, and small waits, but big options on flights and routes to major hubs.



- ▶ Exit the Airport on Milton Proby Parkway/Drennan Road
- ▶ After approximately 4 miles, turn left on South Academy Blvd.
- ▶ In approximately 1.8 miles, merge onto I-25 North and continue for approximately 5.7 miles
- ▶ Take Exit #141 for US-24/West Cimarron St. and continue West on US-24 for about 9.5 miles
- ▶ Turn left onto Fountain Avenue and continue for approximately 0.3 miles
- ▶ Take a slight left to continue onto Pikes Peak Highway

FROM DENVER INTERNATIONAL AIRPORT (DEN)

- ▶ Exit the airport on Peña Blvd.
- ▶ Take E-470 South (toll road) for about 34 miles
- ▶ Exit onto I-25 Southbound to Colorado Springs
- ▶ In approximately 55 miles, take Exit #141 for US-24/West Cimarron St.
- ▶ Continue West on US-24 for about 9.5 miles
- ▶ Turn left onto Fountain Avenue and continue for approximately 0.3 miles
- ▶ Take a slight left to continue onto Pikes Peak Highway

Scan the QR code for
Google Maps Directions to
the Pikes Peak - America's
Mountain Toll Gate



WHO WILL YOU SEE ON THE MOUNTAIN?

It takes hundreds of committed people from our Community to make this race happen! Please be respectful and say **THANK YOU!**



- ▶ Competitors and Crew Members
- ▶ PPIHC Race Officials, Safety Team and Staff
- ▶ Volunteers – Crosswalks and Parking Areas
- ▶ Pikes Peak – America's Mountain Staff
- ▶ US Forest Service
- ▶ El Paso and Teller County Sheriff
- ▶ Search and Rescue
- ▶ Local Fire Departments
- ▶ First Aid Volunteers
- ▶ Media - Photographers and Videographers
- ▶ Merchandise/Souvenir Sales Team
- ▶ Food Vendors
- ▶ Private Security
- ▶ Wildlife

PPIHC LINGO

104TH RUNNING – The 104th race on Pikes Peak. The race was started in 1916, but no competition was held during WWI and WWII.

COG RAILWAY – Historic railway to the summit of Pikes Peak. Open to the public on race day.

CRYSTAL RESERVOIR – Shuttle pickup location and visitors center below the Start Line.

FAN FEST – Street festival welcoming 35,000 fans on Friday night prior to the race in downtown Colorado Springs.

FAMILY PACK – A ticket admitting 2 or more spectators in a single vehicle – family or friends!

GATEWAY – Entrance to Pikes Peak – America's Mountain. Tickets will be checked here.

GEAR DOWN – Using a low gear when driving down the mountain to keep brakes from failing due to overheating.

GREEN FLAG – Signals to the driver they may begin their run.

KING OF THE MOUNTAIN – Each year's driver with the overall fastest time.

LAUNCH AREA – Starting grid staging prior to taking the green flag.

OPENING CEREMONIES – Pre-race driver's meeting, National Anthem, and invocation.

OPEN FIRES – A flame without an on/off switch – prohibited on Pikes Peak.

PARADE OF CHAMPIONS – Post-race parade of competitors returning from the Summit to the Pit area.

PPIHC – Pikes Peak International Hill Climb.

QUALIFYING – A competitor's fastest time from the Start Line to Glen Cove, this determines race day run order.

RACE DIRECTOR – Directs on-course action on race day.

ROOKIE – First time competitor on Pikes Peak / Never taken a green flag.

RUN ORDER – The order in which drivers take the green flag on race day.

SANTA'S WORKSHOP – Colorado amusement park just below the Gateway.

START LINE – Timing each competitor's run begins here.

SUMMIT / FINISH LINE – 14,115' top of Pikes Peak, timing ends here.

SWITCHBACKS / "Ws" – Tight hairpin turns below Devils Playground.

TECH INSPECTION – Pre-race event on the Monday of Race Week, held at the Broadmoor World Arena to certify safety and legality of vehicles.

TREE LINE – The elevation in which trees no longer grow, around 11,500 ft. in Colorado.

WAIVER – Insurance mandated release of liability.

THANK YOU

TO OUR MAJOR SPONSORS

THE
BROADMOOR

GRAN TURISMO®
THE REAL DRIVING SIMULATOR

**TOYO
TIRES®**

ACURA
PRECISION CRAFTED PERFORMANCE

Mobil 1™

Perkins Motors
CHRYSLER DODGE JEEP RAM

B.R.M.
..Chronographes..



GEAR UP FOR RACE DAY

JUNE 21

We'll see you there!

FOLLOW PPIHC
ON SOCIAL MEDIA



@PikesPeakHillClimb



@PPIHC